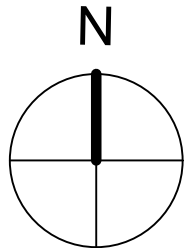


New access to comply with SCC Highways drawing DM03 for a shared domestic driveway with a dropped kerb. 4.5m wide x 5m deep RC concrete splay. 2.4 x 43m vehicle visibility splay and pedestrian visibility shown



Revisions:  
A - 15.03.2024: visibility splay included within red line boundary

**PLANNING**

Project <b>LAND WEST OF GROVE VIEW, UPTHORPE, IP31 2AP</b>			<b>hitchcock architects ltd</b> 18 The Avenue Sunbury-on-Thames Middx TW16 5ES m: 07855 522478 e: andrew@hitchcockarchitects.co.uk w: www.hitchcockarchitects.co.uk
Drawing <b>PROPOSED (INDICATIVE) SITE PLAN</b>			
Drawing No. <b>GVU - 03A</b>	Scale <b>1:500 @ A3</b>	Date <b>27.02.2024</b>	
© HITCHCOCK ARCHITECTS LTD			